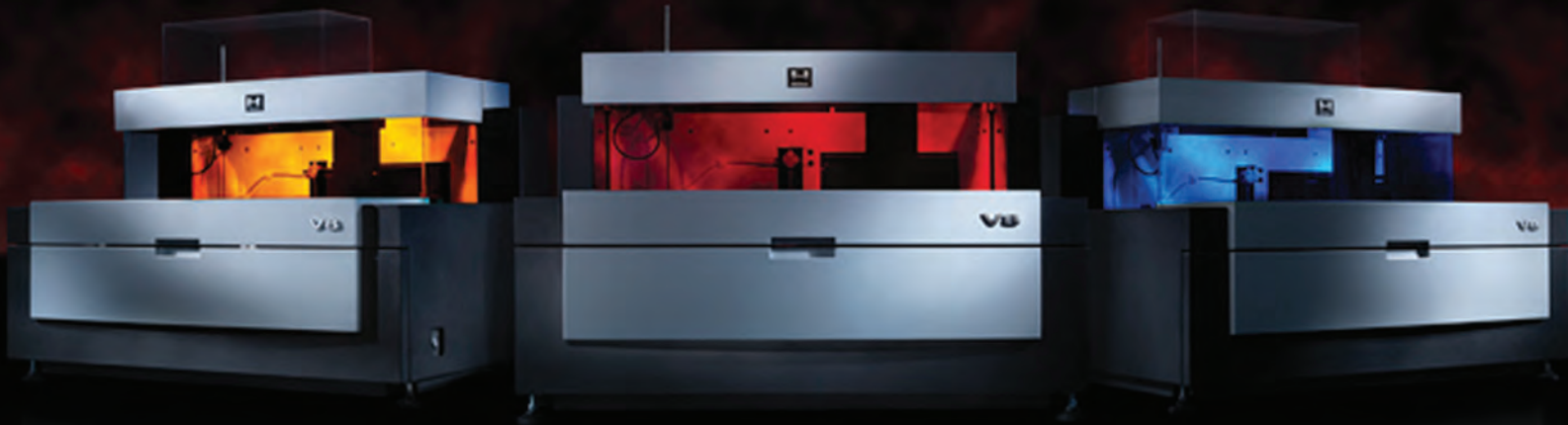


Velocity8CE*

Automated Clinical Capillary Electrophoresis



*Pre-market notification pending for V8, SPE6 and Immunodisplacement. July 2011

Pioneering progress with Helena Biosciences

V8 sets new standards of excellence in Clinical Capillary Electrophoresis by revolutionizing usability and truly bringing automation to life. V8 is an integrated diagnostic system optimized with an extensive assay menu for the preparation, separation and analysis of human proteins for detection of many disease states.

In modern laboratories, speed, cost and efficiency are key

The development of the V8 capillary electrophoresis system brings a substantial improvement to clinical laboratories. The V8 enhances precision and improves laboratory efficiency by eliminating manual steps, improving separations of protein fractions and increasing sample throughput with complete automation.

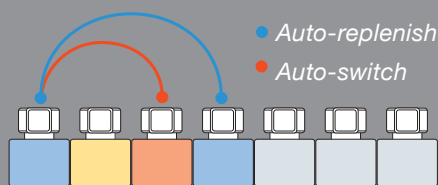


Multi Assay

V8's method-handling platform is the key to its high efficiency and productivity – giving you more hands-off time than other CE systems.

- All chemistries held on-board for walk-away automation
- Fully automated buffer switching
- Run different samples simultaneously on same rack

- Automated assay switching and buffer replenishment
- 4 open buffer positions and 3 system defined positions all on-board

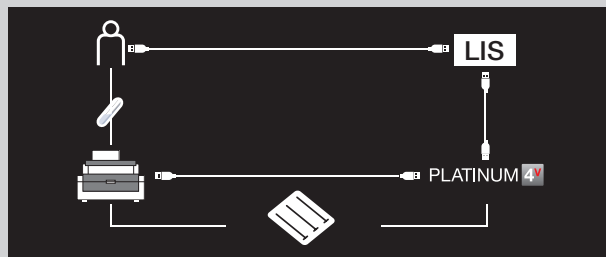
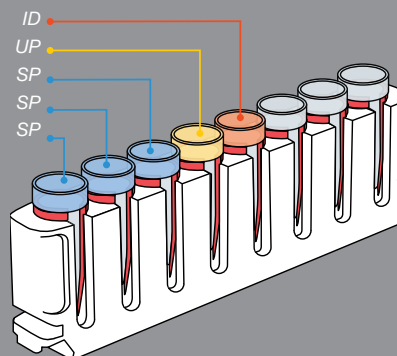


Sample Handling

Streamline your workflow with automated sample handling.

- Uninterrupted high throughput analysis
- Load up to 112 samples at any one time and go
- Complete audit trail accountability

- Run up to 48 serum proteins per hour
- Complete random access to samples
- Barcoded samples for total traceability



Gel integration

Seamlessly switch to gel electrophoresis for confirmatory testing

- Automated sample preparation for off-board gel analysis
- Complete integration with all Helena gel systems
- Automated dilutions for multiple methods



More V8 Features



True Identity

Total audit trail accountability and analysis security.



Continuous Loading

Easy access for continuous high throughput assays.



Auto Pilot

Define your assay, load your samples and close the lid – it's as simple as that.



Sample Recall

Recall tested samples for further diagnostic analysis.



Smart System

Learns editing and retest patterns.



Eco Friendly

Energy efficient technology for a green result you can rely on.



Fast Track

Place STAT samples at the head of the line for speedy results.



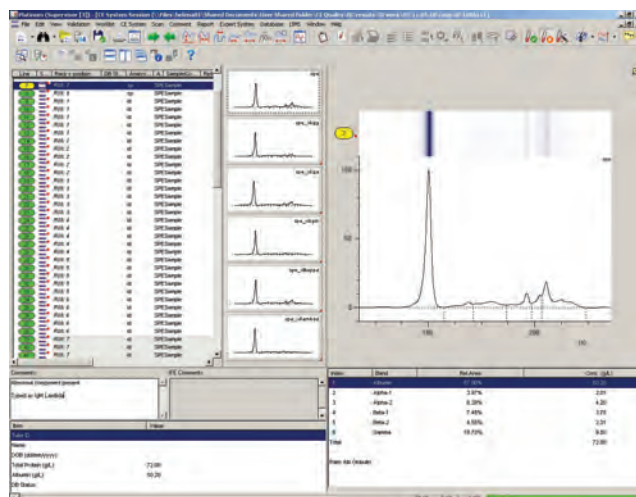
Intuitive Status

Instrument status continuously revealed by unique visual illumination system and spoken notifications.

PLATINUM ^{4V} Software

Platinum 4^V is the world's most advanced software package for automated clinical capillary electrophoresis. Designed specifically to make the management, analysis and interpretation of clinical test results as simple, accurate and as efficient as possible, Platinum 4^V provides a comprehensive set of analytical tools and user-defined options that can meet the data analysis needs of the clinician.

- Drive/control V8 functionality
- Advanced editing tools
- Statistical calculation and display
- Database flagging of patient status
- Bi-directional communication with host network
- Immunodisplacement capture and linkage to scan traces
- Multiple search parameters with overlay capacity
- Full audit trail accountability
- Powerful, comprehensive database
- QC and validation using Levey-Jennings



Technical Specifications

Identification	<ul style="list-style-type: none"> Positive patient identification. Sample rack bar coded identification. Bar code buffer and reagent containers. 	Assays/ throughput/ tests per kit	Serum Protein 6-band* Immunodisplacement *	48/hr 12/hr	500 50
Bar code	<ul style="list-style-type: none"> Embedded bar code reader. 70° angle. 1000 decodes per second. Symbologies: Code 39, Codabar, Code 128, Interleave 2 of 5, Code 93, UPC/EAN, Pharmacode and PDF417. 				
Loading	Up to 14 sample racks of 8 primary tubes; total 112 standard operation.				
Gel sample trays	Compatible with SPIFE sample trays.	Walk-away automation	<ul style="list-style-type: none"> 112 primary sample tubes. 		
Sampling	<ul style="list-style-type: none"> Generic sample cups. Sampling is direct from uncapped primary tubes: <ul style="list-style-type: none"> Diameter: max. 18 mm. Height: max. 100 mm. Dead volume: 30 µl. 	Data processing	<ul style="list-style-type: none"> Unlimited capacity for patient storage in single session. Database management of up to 2 million patient scans. Trace capture. Trace editing. Statistical calculation and display. Quantitated calculation and display. Database flagging of patient status. Bi-directional communication; import and export of patient data and results. Immunodisplacement image capture & linkage to scan traces. Multiple search parameters with overlay capacity. Expert System. 		
Pre-analytical	Dilutions, cell lysis, reagent addition and reagent incubation.	Report printing	Full in-built desktop publishing package.		
Migration	<ul style="list-style-type: none"> Eight silica-fused capillaries. Peltier controlled temperature capillary chamber. 				
Buffers	<ul style="list-style-type: none"> Seven on-board buffer system containers; up to four open user-defined assay buffer positions. Dynamic buffer level monitoring. 				
Reagents	<ul style="list-style-type: none"> Ten open positions for reagents and antisera: Anti-IgG, -IgA, -IgM, kappa, lambda, Free kappa, Free lambda, -IgD and -IgE. Sample diluents and preparatory solutions. Peltier controlled reagent positions. Dynamic reagent level monitoring. 	Q.C. and validation	Levey-Jennings and statistics reports.		
Maintenance	<ul style="list-style-type: none"> On-board maintenance solutions. Automated maintenance procedures. Automated purging between assay changes. 	User interface	Windows XP based application.		
		Dimensions	35.4" (width) × 26.6" (depth) × 22" (height). 900 mm (width) x 650 mm (depth) x 560 mm (height).		
Detection	<ul style="list-style-type: none"> Light source: deuterium lamp. Wavelength detection: monochromator with 200-600nm wavelength range. Detection: eight photodiodes. 	Weight	154 lbs. / 70 kg.		
		Connections	<ul style="list-style-type: none"> Output connections Ethernet connection from V8 to PC. RS232 serial connection to host system. USB connection to peripheral utilities. 		
XYZ arm	Up to 160 dilutions per hour; fluid level detection.	Power	<ul style="list-style-type: none"> Consumption of 228 W (VA). The power supplies in the V8 can deliver up to 650 W. 		
Sensitivity	Detection of Serum Proteins at 25 mg/dL.	Environmental operating conditions	<ul style="list-style-type: none"> Ambient temperature 15 to 30°C (59°F to 86°F). Non-condensing relative humidity between 5% and 85%. Maximum altitude of 6,562' (2000 meters). 		



Helena Laboratories
PO BOX 752
Beaumont TX 77704-0752
Tel: 800-231-5663
Fax: 409-842-6241
www.helena.com



Helena Biosciences Europe
Tel: +44 (0)191 482 8440
Fax: +44 (0)191 482 8442
www.helena-biosciences.com